



**PO Box 397  
Fortson, GA 31808**

**800-755-0825**

Wednesday, February 27, 2019

Craig M. Barnaby  
BEROXpert North America™  
1000 Northfield Court, Suite 110  
Roswell, GA 30076

Ref: Original PB™ EIFS Washer

I am writing to confirm our approval of the Original PB™ EIFS Washer for use in our Aggre-flex Exterior Insulation and Finish Systems. Installation will follow the recommendations in our attached data sheet.

Should you have any questions or require more information, please feel free to call me at 800-755-0825.

Sincerely,

Dennis Deppner, CEP  
Technical Services Manager  
tech@masterwall.com



**We finish strong.**  
*masterwall.com*



# CIFS® Fasteners & Plates

For Master Wall® Systems

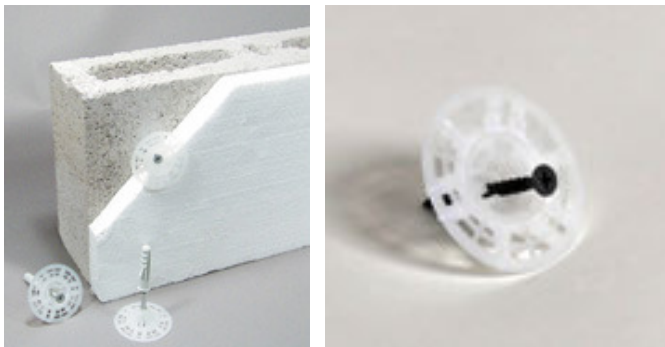
**Master Wall® Continuous Insulation and Finish Systems (CIFS® or EIFS) use a variety of fasteners and plates when mechanically attaching the insulation board to or through a substrate.**

**All fastening systems must be applied according to Master Wall instructions. Please reference the system detail drawings and specifications for approved fastening methods and call Master Wall for any special conditions or questions.**

## Approved Plates

Manufacturer	Aggre-flex EIFS Aggre-flex Drainage EIFS	QRW1 Drainage EIFS
<a href="#">Buildex</a>	Gridmate PB	Gridmate
<a href="#">Demand Products</a>	PB Washer PBH Washer Gridmaster Washer	DP300 DP400
<a href="#">BeroXpert</a>	Original PB™ Washer	
<a href="#">Wind-Lock</a>	Wind Devil 2	ULP302 ULP402

Aggre-flex Systems Plate Examples



QRW1 Plate Examples



**Master Wall Inc.®**  
*Building a Culture of Excellence*

[masterwall.com](http://masterwall.com)

PO Box 397 • Fortson • GA • 31808 • 800-755-0825



# CIFS® Fasteners & Plates

For Master Wall® Systems

## Fastener Length Calculator for EIFS

Calculate the fastener size for your project

Fastener Type	Insulation Thickness*	Sheathing Thickness	Minimum Penetration	Total Length	Available Sizes (Courtesy Wind-Lock)
Wood		Gypsum 1/2" to 5/8"	3/4"		1-5/8", 2", 2-1/2", 3", 3-3/4", 4-1/2"
Wood		Plywood 1/2" to 3/4"	1/4"		1-5/8", 2", 2-1/2", 3", 3-3/4", 4-1/2"
Light Metal		25ga min.	1/4"		1-5/8", 2-1/4", 2-5/8", 3", 4", 4-1/2"
Steel		Gypsum 1/2" to 5/8"	1/4"		1-5/8", 2", 2-5/8", 3", 3-3/4", 4-3/8"5", 6", 7", 8"
Masonry		1" to 1-3/4" (Pre-drill hole 1/2" deeper than fastener penetration)			1-3/4", 2-1/4", 2-3/4", 3-1/4", 4"

\*1" to 4" - Aggre-flex, 5/8" to 2" QRW1

Wind-Lock Premium Wood/Light Metal Screw with Climacoat®



Wind-Lock Premium Masonry Screw with Climacoat®



Wind-Lock Premium Steel Screw with Climacoat®



Wind-Lock Economy Zinc Wood Screw



Wind-Lock Economy Zinc Light Metal Screw



**Master Wall Inc.®**  
*Building a Culture of Excellence*  
**masterwall.com**

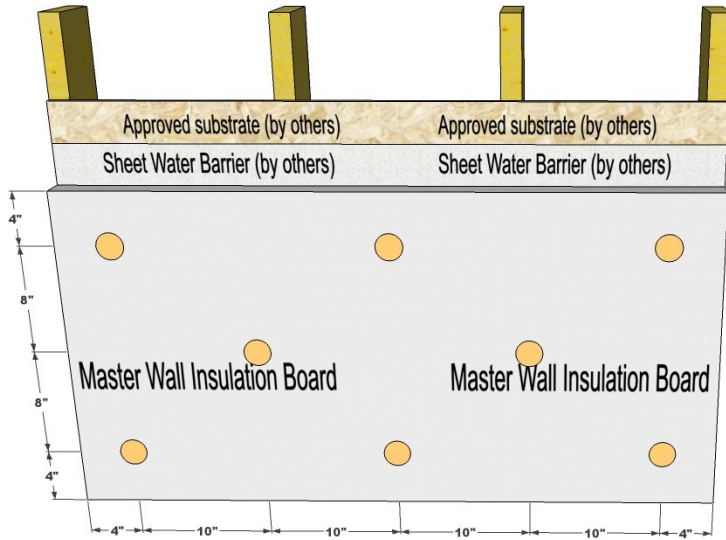
PO Box 397 • Fortson • GA • 31808 • 800-755-0825



# CIFS® Fasteners & Plates

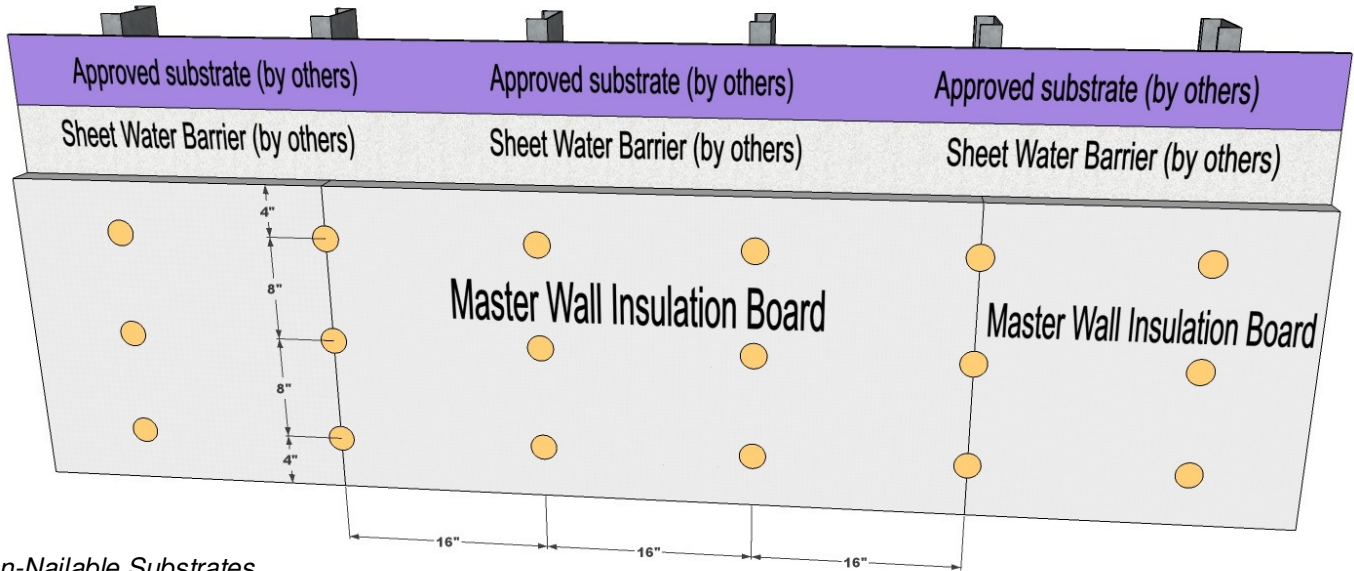
For Master Wall® Systems

## Aggre-flex/Aggre-flex Drainage EIFS



### Available Substrates

- Wood
- Plywood
- Oriented Strand Board (OSB)
- Masonry/Concrete
- Metal



### Non-Available Substrates

- Gypsum

Metric: 4"=102 mm, 8"=204 mm, 10"=254 mm, 16"=406 mm

Information contained in this product data sheet conforms to the standard detail recommendations and specifications for the installation of Master Wall Inc.® products and is presented in good faith. Master Wall Inc.® assumes no liability, expressed or implied as to the architecture, engineering, or workmanship of any project. This information may be concurrent with, or superseded by other applicable documents, such as specifications and details. Contact Master Wall Inc.® for the most current product information. ©2019 Master Wall Inc.®



**Master Wall Inc.®**  
*Building a Culture of Excellence*  
**masterwall.com**

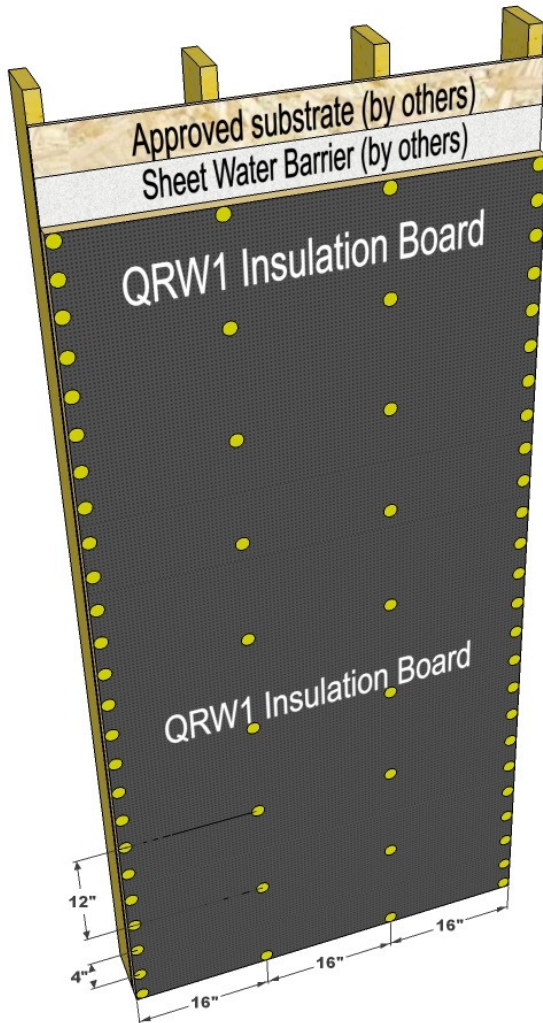
**PO Box 397 • Fortson • GA • 31808 • 800-755-0825**



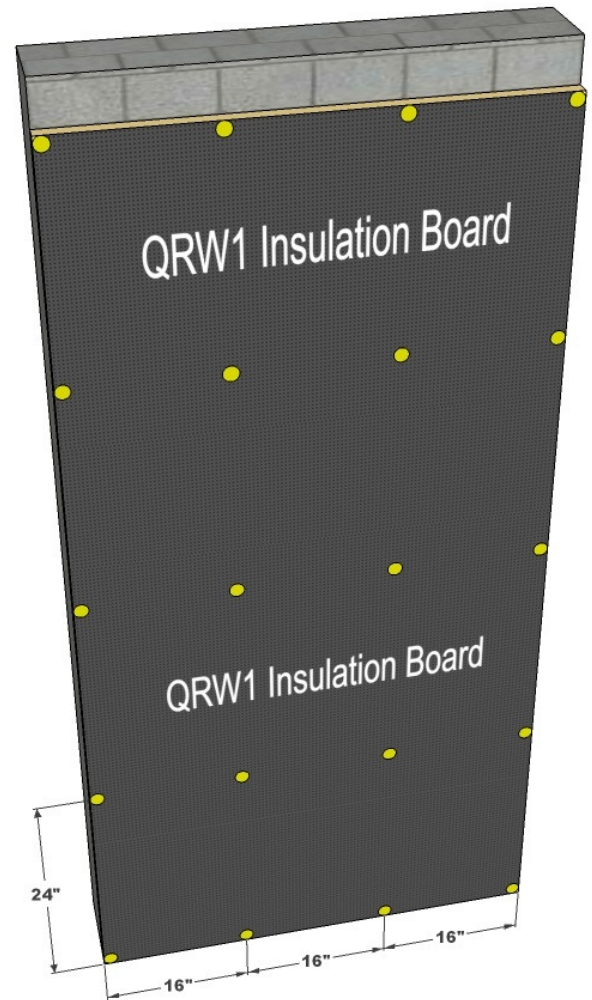
# CIFS® Fasteners & Plates

For Master Wall® Systems

## QRW1 Drainage EIFS



- Wood
- Plywood
- Oriented Strand Board (OSB)
- Metal



- Masonry/Concrete

Metric: 4"=102 mm, 12"=305 mm, 16"=406 mm, 24"=610 mm

Information contained in this product data sheet conforms to the standard detail recommendations and specifications for the installation of Master Wall Inc.® products and is presented in good faith. Master Wall Inc.® assumes no liability, expressed or implied as to the architecture, engineering, or workmanship of any project. This information may be concurrent with, or superseded by other applicable documents, such as specifications and details. Contact Master Wall Inc.® for the most current product information. ©2019 Master Wall Inc.®



**Master Wall Inc.®**  
*Building a Culture of Excellence*  
**masterwall.com**

**PO Box 397 • Fortson • GA • 31808 • 800-755-0825**