

BERO **X**pert

NORTH AMERICA

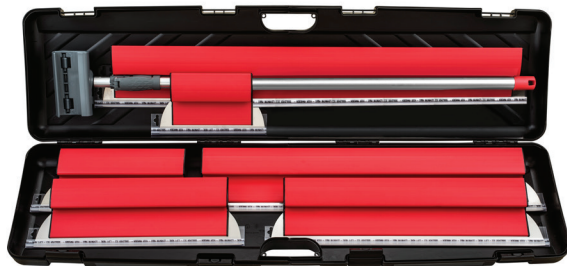


SIMPLY BETTER TOOLS

VOLUME ONE



BERO^Xpert
NORTH AMERICA



PREMIUM Finishing Blade/Knife Kits

- Highest standard for premium wipe-down and finishing knives
- INOX German stainless steel for the highest level of finish
- Precise fulcrum point designed into grip area allowing ten times more contact area with surface
- Comfortable ergonomic design reduces wrist strain

BX80428

Master Premium Finishing Blade Kit

BERO^Xpert finishing blades –
10", 14", 18", 24", 32", 40"
Extension Pole 77"
Carrying Case



BX80374

Junior Premium Finishing Blade Kit

BERO^Xpert finishing blades –
10", 14", 18", 24"
Extension Pole 46"
Carrying Case
Joint knife 4"

BX3541100-2-40

Extension Pole with Extendable Handle

- Handle extends to 6'
- Quick clip attachment for SuperFLEX blade / spatula





PREMIUM Drywall Finishing Blade

- Premium SuperFLEX 0.3mm blade
- Ergonomic grip finishing blade for level five quality finish
- INOX German stainless steel for the highest level of finish
- Integrated handle for hand work doubles as a mounting for the optional extension handle
- Perfect for large area smoothing, skimming or joint finishing
- Flex action and rounded corners provide ten times more contact with the surface
- Handle is engineered for comfort and establishes a perfect fulcrum point for perfect finishing and smoothing



Ergonomic Grip Finishing Blade for level five quality finish

- Rounded edges & tapered blade
- For finishing & smoothing walls and ceilings
- Works with plasters and special finishes
- SuperFLEX stainless steel blade
- Rigid plastic molded frame

ITEM NUMBER	SIZE
BX541025-10	10"
BX541035-14	14"
BX541045-18	18"
BX541060-24	24"
BX541080-32	32"
BX541100-40	40"
BX541120-48	48"



BEROXpert
NORTH AMERICA

BERO-Grip Drywall Finishing Blades

- Highest standard for wipe down and finishing knives
- Features INOX German stainless steel
- Strong but flexible with precise fulcrum point designed into grip
- Blade has ten times more contact area with surface for a superior finish



BX80355

BERO-Grip Master Kit

BERO-Grip STIFF

(0.4 mm) finishing blades – 10", 12", 20"

BERO-Grip FLEXI

(0.25 mm) finishing blades – 12", 25"

BERO-Grip handle

Extension Pole 59" and carrying case



BX1482100

Extension pole for BERO-Grip system tools

- Extends to 83" with handle
(handle sold separately)



BX577000

Handle for BERO-Grip system tools (sold separately)

BERO-Grip Blades

- Extra light
- Easy handling
- Very easy to clean
- Wide range for extra wide use
- From wall preparation to wall finishing



FLEXI
0.25 mm blade

STIFF
0.4 mm blade

STIFF – 0.4 mm BLADE	
ITEM NUMBER	SIZE
BX568020-08	8"
BX568024-10	10"
BX568030-12	12"
BX568035-14	14"
BX568040-16	16"
BX568045-18	18"
BX568050-20	20"
BX568060-24	24"
BX568080-32	32"
BX568110-44	44"

FLEXI – 0.25 mm BLADE	
ITEM NUMBER	SIZE
BX570020-08	8"
BX570024-10	10"
BX570030-12	12"
BX570035-14	14"
BX570040-16	16"
BX570045-18	18"
BX570050-20	20"
BX570060-24	24"
BX570080-32	32"
BX570110-44	44"

BERO-Grip STIFF Plastic plaster blade

- STIFF great for plastering

ITEM NUMBER	SIZE
BX574030	1"
BX574060	24"
BX574100	40"

BEROXpert
NORTH AMERICA



BERO-Grip FLEX

- Rubber blades and wipe down knives
- Great for wall paper

ITEM NUMBER	SIZE
BX566030	12"
BX566065	26"
BX566100	40"



BERO^Xpert Joint Knives

NORTH AMERICA

Our Joint and Coating knives are high quality durable tools. Featuring advanced engineering and the highest grade INOX German stainless steel, BERO^Xpert PREMIUM tools produce the absolute best finish in the industry. Choose from our plastic handle or nail head handles, and you will have a tool for life.

BERO polypropylene handle

Tempered stainless steel blade that is very flexible yet durable

ITEM NUMBER	DESCRIPTION	TYPE OF KNIFE
BX505010	4" BERO polypropylene handle	Joint
BX505012	5" BERO polypropylene handle	Joint
BX505015	6" BERO polypropylene handle	Joint
BX505025	10" BERO polypropylene handle	Joint



BERO ergonomic plastic handle

Tempered stainless steel blade and metal hammer cap

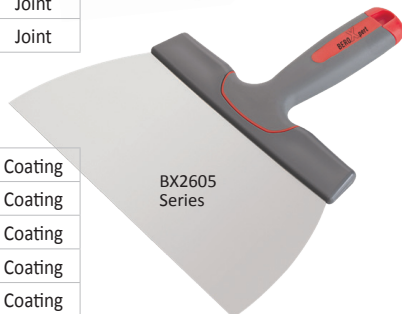
BX2613010	4" BERO ergonomic plastic handle	Joint
BX2613012	5" BERO ergonomic plastic handle	Joint
BX2613015	6" BERO ergonomic plastic handle	Joint
BX2613025	10" BERO ergonomic plastic handle	Joint



BERO ergonomic soft-touch handle

Stainless steel blade

BX2605010	4" BERO ergonomic soft-touch handle	Coating
BX2605016	6" BERO ergonomic soft-touch handle	Coating
BX2605020	8" BERO ergonomic soft-touch handle	Coating
BX2605024	10" BERO ergonomic soft-touch handle	Coating
BX2605030	12" BERO ergonomic soft-touch handle	Coating



BERO^Xpert

NORTH AMERICA

Joint Knife Set

Featuring BERO ergonomic plastic handles.

- 7 joint knives
- 1 scraper
- Metal hammer cap
- Tempered stainless steel blades
- Very flexible, yet very durable
- 2" to 6"



BX2433

PREMIUM Corner Trowels

Featuring advanced engineering, the highest grade INOX German stainless steel, and the most comfortable cork handle in the business.

- 90° Rounded Corner



Inner corner
trowel

Outer corner
trowel

INNER CORNER	OUTER CORNER	
ITEM NUMBER	ITEM NUMBER	SIZE
BXC2251-19R	BXC2250-19R	3/4" x 3/4"
BXC2251-26R	BXC2250-26R	1" x 1"
BXC2251-38R	BXC2250-38R	1-1/2" x 1-1/2"
BXC2251-51R	BXC2250-51R	2" x 2"
BXC2251-00	BXC2250-00	4" x 4"
BX0806		5" x 5"



Wood handle
bullnose
trowel



PREMIUM Finishing Trowels

These trowels are constructed to the highest standard for premium trowels. Featuring advanced engineering and the highest grade Golden German hardened chrome stainless steel. BEROXpert trowels produce the absolute best finish in the industry. The secret is the strong but flexible Golden blade that adds flexibility and durability. This allows the trowel to generate a superior finish. The ergonomic Cork grip or Wooden grip is very comfortable even with extended use.

Our trowels are set to change the 'industry standard' and will become the go-to plastering trowel of the 21st Century.

BEROXpert
NORTH AMERICA



Golden hardened stainless steel finishing trowels

- Handmade in Germany
- Flat, fully-ground plate with 'broken-in edge'



CALIFORNIA CAMELBACK WOOD HANDLE TROWELS

ITEM NUMBER	SIZE
BXW2217-2812-G	11" x 4.75"
BXW2217-3012-G	12" x 4.75"
BXW2217-3312-G	13" x 4.75"
BXW2217-3512-G	14" x 4.75"
BXW2217-4012-G	16" x 4.75"

COMFORT CORK HANDLE HANDLE TROWELS

ITEM NUMBER	SIZE
BXC6217-2812-G	11" x 4.75"
BXC6217-3012-G	12" x 4.75"
BXC6217-3312-G	13" x 4.75"
BXC6217-3512-G	14" x 4.75"
BXC6217-4012-G	16" x 4.75"

BEROFLEX Premium SuperFLEX INOX Stainless Steel trowels

These trowels are constructed to the highest standard of all INOX double blade German trowels available, anywhere.

They feature the highest grade of Golden German hardened chrome stainless steel that money can buy. BEROXpert trowels produce the absolute best finish in the industry. The secret is the strong Golden blade that adds flexibility and durability. A superior finish is what you will achieve every time. The Comfort Cork or the California Camelback Wood grip are very comfortable with extended use.



*The World's Favorite Trowel
Among Professionals*

BEROXpert
NORTH AMERICA

- SuperFLEX INOX Double Blade - will not delaminate
- World's best German handmade trowels
- Available with our California camelback Wood or Comfort Cork Grip
- Precision fully-ground plate, burred edges, ready to use out of the box



CALIFORNIA CAMELBACK WOOD HANDLE TROWELS	
ITEM NUMBER	SIZE
BXW2215-2812SF	11" x 4.75"
BXW2215-3012SF	12" x 4.75"
BXW2215-3312SF	13" x 4.75"
BXW2215-3612SF	14" x 4.75"
BXW2215-4012SF	16" x 4.75"

COMFORT CORK HANDLE HANDLE TROWELS	
ITEM NUMBER	SIZE
BXC6215-2812SF	11" x 4.75"
BXC6215-3012SF	12" x 4.75"
BXC6215-3312SF	13" x 4.75"
BXC6215-3612SF	14" x 4.75"
BXC6215-4012SF	16" x 4.75"



BERO**X**pert
NORTH AMERICA

Premium Drywall Trowels

Our PREMIUM Drywall trowels are the highest standard for premium curved drywall trowels. Features advanced engineering and produces the absolute best finish in the industry.

- Handmade in Germany
- Flat, fully ground plate with 'broken-in edge'

Golden hardened stainless steel curved drywall trowel



5mm Curve

CALIFORNIA CAMELBACK WOOD HANDLE TROWELS	
ITEM NUMBER	SIZE
BXW42217-31PLG	12"x 4.75"
BXW42217-3133PLG	13"x 4.75"
BXW42217-3135PLG	14"x 4.75"
BXW42217-3140PLG	16"x 4.75"

COMFORT CORK HANDLE HANDLE TROWELS	
ITEM NUMBER	SIZE
BXC4217-31PLG	12"x 4.75"
BXC4217-3133PLG	13"x 4.75"
BXC4217-3135PLG	14"x 4.75"
BXC4217-3140PLG	16"x 4.75"

BERO^Xpert

NORTH AMERICA

PREMIUM Trowels

The ULTRA LIGHT finishing trowel for drywall, plaster, EIFS and concrete

- Polycarbonate frame
- Rounded edges

BX1716
Series



BX1745
Series



The very LIGHT finishing trowel for drywall, plaster, EIFS and concrete

- Ergonomic soft-grip handle
- Aluminum frame

BX17470
Series



BX235700



BERO DECOFLEX UL

- Tempered and polished stainless steel blade 0.4mm

ITEM NUMBER	SIZE IN INCHES
BX1716008	8" x 3"
BX1716411	9.5" x 4.3"
BX1716812	11" x 4.75"
BX1718028-12	12" x 4.3"
BX1718035-14	14" x 4.3"

BEROFLEX UL SuperFLEX

- SuperFLEX INOX stainless steel double blade 0.3 mm

ITEM NUMBER	SIZE IN INCHES
BX1745030-12	12" x 4.3"
BX1745035-14	14" x 4.3"
BX1745040-16	16" x 4.3"

BEROFLEX DB

- SuperFLEX INOX stainless steel double blade 0.3 mm

ITEM NUMBER	SIZE IN INCHES
BX1747030-12	12" x 4.3"
BX1747035-14	14" x 4.3"
BX1747040-16	16" x 4.3"

BERO Trowel F-line

- Tempered stainless steel blade 0.6mm

ITEM NUMBER	SIZE IN INCHES
BX2357000	14" x 4"





BERO^Xpert

NORTH AMERICA



BX5000



BX6600

BlackLabel Tools

Economical, but high quality describes our BlackLabel selection of advanced engineered stainless steel BERO^Xpert trowels. The secret is the strong but flexible stainless steel blades that allow flexibility and maximum durability. The lightweight ergonomic plastic grip is very comfortable with extended use.



BX800

**Sold in Contactor
6 Packs**

ITEM NUMBER	DESCRIPTION	SIZE
BX5000	11" trowel with open plastic handle	11"
BX6300	12" trowel with closed plastic handle	12"
BX5400	14" trowel with closed plastic handle	14"
BX6500	15" trowel with closed plastic handle	15"
BX6600	19" trowel with closed plastic handle	19"
BX8000	Right angle 11" trowel with open plastic handle	11"



Mud-Rollers

BEROXpert Mud-Rollers are the newest standard for drywall finishing and mud application.

Durable and easy to handle, the rollers are engineered specifically with the drywall finisher in mind.

The nap is fabricated out of specially developed curly black plastic enabling the professional to apply up to five times more skim coat in one pass while still allowing for quick and painless cleaning. This generates a superior finish while keeping clean up time at a minimum.



BX2987080

BEROXpert
NORTH AMERICA

ITEM NUMBER	DESCRIPTION
BX2987080	3" Mud-Roller with frame
BX2987180	7" Mud-Roller with frame
BX2987220	9" Mud-Roller with frame
BX987080	3" Mud-Roller replacement sleeve
BX987180	7" Mud-Roller replacement sleeve
BX987220	9" Mud-Roller replacement sleeve

BERO Bailer™

- Eliminates the need for a hawk
- Built-in bucket hook
- Galvanized steel
- Wood handle
- Reinforced strap

ITEM NUMBER	SIZE
BX0415	7" diameter



Dustless Sanding System

The Dustless Sanding System is light-weight and allows for an economical way to sand walls without the need for expensive equipment prone to breakdowns. The extension pole can be used with or without the suction hose (use your vacuum system).



Dust Free Sanding System Kit

Flat and Corner Sander, Dust Free Extension Pole, 12" BERO-Grip FLEXI blade, 120 & 180 grit replacement sandpaper all in a carrying case.



BX1360000

ITEM NUMBER	DESCRIPTION	SIZE IN INCHES
BX80321	Flat vacuum sander with perforated pad and Dust Free Extension Pole	8"x8"
BX1357000	Flat vacuum sander with perforated pad HAND HELD – DOES NOT WORK WITH EXTENSION POLE	8" x 8"
BX1382000	Replacement perforated flat sander pad	8" x 8"
BX80322	Corner vacuum sander with perforated pad and Extension Pole	4.75" x 5.75"
BX1360000	Corner vacuum sander with perforated pad HAND HELD – DOES NOT WORK WITH EXTENSION POLE	4.75" x 5.75"
BX1389000	Replacement perforated corner sander pad	8" x 8"
BX1367000	Hose for vacuum system – universal ends	16'

BX1354150

Extension Pole

- For vacuum sand system
- Extends to 117"



BX1357000

BX80321



BX80322



- Use the flat or corner sanders with this ingenious system.
- Perforated sand paper allows the dust to be drawn away

SANDER REFILLS

BX5396120	120 Grit 10 pk for Flat Sander	8" x 8"
BX5396180	180 Grit 10 pk for Flat Sander	8" x 8"
BX5396220	220 Grit 10 pk for Flat Sander	8" x 8"
BX5398120	120 Grit perforated mesh 10 pk for Flat Vacuum Sander	8" x 8"
BX5392120	120 Grit 10 pk for corner sander	4.75" x 5.75"
BX5392180	180 Grit 10 pk for corner sander	4.75" x 5.75"
BX5399120	120 Grit perforated mesh 10 pk for corner sander	4.75" x 5.75"

Inspection Lamp Kits

The BEROXpert powerful cordless three LED lamp allows you to inspect the wall as you finish it to the highest level possible. The extension pole will allow you to access tall ceilings or prop against walls for hands-free operation.

- The unit will not heat up
- Five hour, long-lasting 10W battery
- Protective carrying case



BX1354150

Extension Pole

- For wireless low angle light system
- Extends to 117"



Inspection Lamp

- Cordless with five hour, long-lasting battery
- Three LED Lamps
- Approx. 1600 Lumens

ITEM NUMBER	DESCRIPTION
BX1378	INSPECTION LAMP KIT Lamp, case and 24VDC power cord
BX80401	INSPECTION LAMP KIT WITH EXTENSION POLE Lamp with case, 24VDC power cord, and extension pole extends to 117"
BX1354150	Extension Pole



BEROXpert
NORTH AMERICA

Floats

Comfort Cork Handle

- ABS rounded edges
- Long lasting ABS plates



ITEM NUMBER	DESCRIPTION	SIZE IN INCHES
BX8117-254R	Cork Handle Round Float	10"
BX8116-03	Cork Handle Float	11" x 5.5"
BX8126-285MR	Cork Handle Float	11" x 2"
BX8126-287MHR	Cork Handle Float	11" x 2.75"
BX3001	11" BlackLabel PVC Float with open handle	11" x 5"
BX3000	11" BlackLabel PVC Float with closed handle	11" x 5"
BX3039	16" BlackLabel PVC Float with closed handle	16" x 7"

BlackLabel Handles

- Long lasting PVC plates





Rasps

The perforated plate will rip through the EPS high spots and will not clog with EPS dust and beads. Our BlackLabel handle is lightweight and comfortable. The flat plates can be replaced making this the most economical rasp available. The inside corner rasp is a must for clean, straight corners.

BlackLabel EPS Rasp and Inside Corner Angle EPS Rasp

- Replaceable metal plate
- Lightweight closed handle
- Outlasts rasp paper 65 to 1
- Fraction of the cost of heavy steel plate rasps



BXO140Z



BXO140



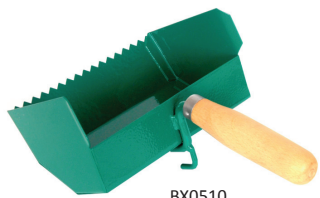
BXO143

ITEM	DESCRIPTION	DIMENSION IN INCHES
BXO140	BlackLabel 11" EPS Rasp	11" x 5"
BXO141	BlackLabel 16" EPS Rasp	16" x 7"
BXO140Z	11" Replacement Metal Plate Rasp	11" x 5"
BXO141Z	16" Replacement Metal Plate Rasp	16" x 7"
BXO143	BlackLabel 11" Inside Corner Angle Rasp	11"



AAC Tools

Premium tools are a must for contractors working with autoclaved aerated concrete. These specialty designed tools are the finest German quality that money can buy.



BX0510

Adhesive Notch Trowel

- Provides a controlled flow and placement of adhesive
- Leaves a cleaner job
- Saves money due to less waste



BX0510

Cutting Guide for AAC block

- Great for precision cutting of rectangular block



BX0514

Groover for AAC block

- Easily cuts grooves into AAC for electrical and wiring channels

ITEM NUMBER	DESCRIPTION	SIZE
BX0502	AAC Adhesive Notch Trowel	4"
BX0504	AAC Adhesive Notch Trowel	6"
BX0506	AAC Adhesive Notch Trowel	8"
BX0507	AAC Adhesive Notch Trowel	10"
BX0508	AAC Adhesive Notch Trowel	12"
BX0510	Cutting Guide for AAC blocks	12" x 10"
BX0514	Groover for AAC blocks	22"
BX1720IN	Drill for water, HVAC, gas pipes and thru wall holes	2"
BX1721IN	Drill for water, HVAC, gas pipes and thru wall holes	2.4"
BX1722IN	Drill for water, HVAC, gas pipes and thru wall holes	3.1"
BX1723IN	Drill for water, HVAC, gas pipes and thru wall holes	4.7"



AAC Drill

- Drill for water, HVAC, gas pipes and thru wall holes



BX0142

Wooden AAC 'Smooth' Block Flat Blade Scraper

- Designed to shave the surface of the AAC blocks



BX0146

Wooden AAC 'Course' Block Notched Scraper

- Designed to rough cut the surface of AAC walls



BX24177

Hand Saw 34/34 for AAC-Blocks



BX0145

BlackLabel Rasp for AAC

- Abrasive replaceable grit
- Smooths walls and removes imperfections

ITEM NUMBER	DESCRIPTION	SIZE
BX0142	Wooden smooth block flat blade scraper	16"
BX0146	Wooden course block notched scraper	16"
BX0145	BlackLabel Rasp	16"
BX24177	Hand Saw 34/34 carbide blade for AAC blocks	28"
BX-T02A315	Rubber Mallet	13.5" x 3.5"



BX-T02A315

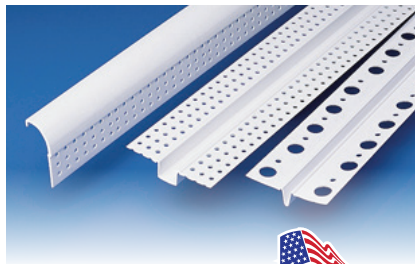
Rubber Mallet

- For easy alignment of AAC blocks



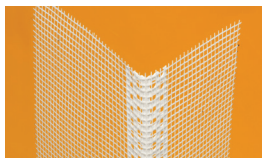
PVC Accessories

From freezing cold to extreme heat, our PVC products deliver optimal results: good looks, ease of handling, moisture management, reduced labor costs and superior field performance. Our PVC trims are listed with Intertek Testing Services/Warnock Hersey to meet or exceed strict standards set by ASTM.



Since 1969
PLASTIC PC
COMPONENTS inc.

***Combat rust while protecting the corners
and edges of drywall and veneer.***



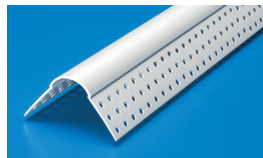
Corner Mesh

- Saves time; improves job quality
- Makes corners more durable; minimizes cracking
- Easy to apply, UV rated
- Fire- and alkaline-resistant mesh
- Complies with ASTM D 579 and EIMA 105.01



Ultra Mat

- Thin nylon matrix profile prolongs life of roof from elements
- Extremely flexible, heat resistant
- Conforms to any contoured surface or roofing material



Bullnose Corner Bead with 3/4" Radius

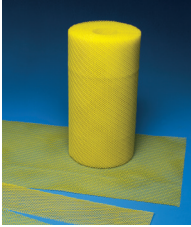
- Used where smooth rounded corners are specified
- Will not dent or rust
- Excellent paint and drywall mud adhesion

**Many Profiles and
Sizes Available**



Trim Tab

- To be used where a wall joins a suspended ceiling, window or door frame.
- Tear away tab eliminates the need for costly masking and provides clean detail



Ultra Lath

- Self-furring, non-rusting
- For exterior or interior vertical applications
- Can be installed over any code approved substrate

Many Profiles and Sizes Available



U Drip Trac

- Provides a clean starting edge at the stem wall
- Eliminates need to back wrap
- Excellent caulk and paint adhesion

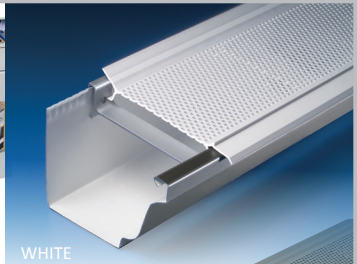


GutterGuard PRO™

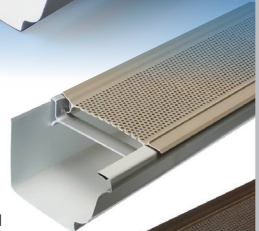
GutterGuard Pro is a one-piece unit, made of heavy duty UV resistant PVC. Its designed to easily slip under the shingle and snap into place without any fasteners allowing for reduced installation time and less parts to inventory. The drip edge removes water from the gutter eliminating unsightly streaks. Ends are trimmed – precut for easy overlapping of each 10' section.

Gutter Guard Pro™

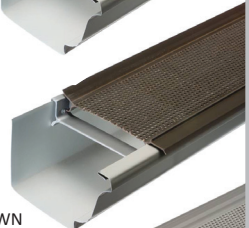
- One-piece, heavy-duty UV resistant PVC unit
- Easy to install - no fasteners needed
- Precut for easy overlapping of each 10' section
- No leaf buildup - prevents tiger striping
- Fits 5" gutters
- Class A fire rating



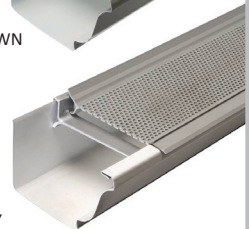
WHITE



TAN



BROWN



GRAY

Tajima

Armored Shock Resistant Case Tape Measure

- GS Lock Extra Stiff 16'/5mm x 1"
- Quick-fit belt holder and tether mount ring
- Extend tape 7.75' horizontal without tape bend

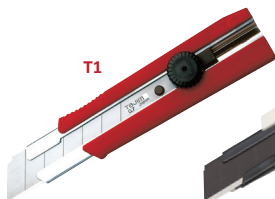


GS16

Additional Products Available



DR1



T1



ES1



VR1

Large thumb screw with magnetic blade retainer

ITEM NUMBER	DESCRIPTION
GS16	Tape measure
DR1	Drywall dual action hand rasp Course, fine and siderail teeth for fast edge shaping
VR1	V-Rex Fixed Blade one piece knives
VR50	V-Rex premium tempered blades optimized for drywall 50 pack
T1	Rock Hard 1" elastomer grip dial lock knife
T10	Rock Hard 1" 10 pack blades
T20	Rock Hard 1" 20 pack blades
ES1	Extra Strong Premium Cutter 3/4" dial lock knife
L10	Endura Blade 3/4" 10 pack

Drywall Blades



L10

T10 / T20

VR50



TYTAN's mix of traditional and innovative products will help you work smarter and more efficiently.

DW90

DRYWALL PRO

- Exceeds ASTM D6464, ASTM C557
- Replaces 14 – 28 oz. tubes of adhesive
- Superior acoustic dampening
- Eliminates nail pops
- 10 second collapse time
- 10 minute open time
- Use from 41°F to 95°F
- Adheres to drywall, masonry, cork, steel & wood studs

FB60

FOAM BOND 60 PRO

- Bonds after 60 seconds
- Secure after 5 minutes
- XPS, EPS, ISO Foam to Foam
- Great for EIFS, SIP's & CI
- UL certified
- Use from 32°F to 95°F
- Adheres foam, concrete, block, wood, steel and exterior sheathing



DWPRO

Sold in case of 12
29 oz. cans



FB60

Sold in case of 12
24 oz. cans



GGUN

Graphite Gun

- 8" all graphite barrel
- Teflon coated basket
- Semi-regular use

Sold individually



PROGUN

Pro-Gun

- 8" all metal construction
- Teflon coated barrel
- Patented Needle Stabilizer
- Everyday professional use

Sold individually



Foam Gun Cleaner

- Removes uncured foam from gun
- Removes uncured foam from building materials and hands

FGCLEAN

Sold in case of 12
24 oz. cans

FGCLEAN-1

Sold individually



DryFlekt® Kick-Out Diverter Flashing

DryFlekt® Kick-Out Diverter is the best practice, sustainable solution for diverting roofline water. Our patented design creates a downward and outward water flow off the roof and away from walls, designed to prevent water intrusion roof-to-wall intersections.

Additional Colors
Available



DryFlekt®, INC.

- Works with lap siding, stone, brick and stucco
- Helps prevent water damage and costly claims
- Will not rust, corrode or conduct electricity
- Manufactured from Thermoplastic PolyOlefin (TPO)

WHITE

TAN

ITEM NUMBER	DESCRIPTION	COLOR	DIRECTION	DIMENSIONS
KOLWT	DryFlekt Gravity Trough Kick-Out Diverter	White	Left	14.5" x 6" x 6"
KORWT	DryFlekt Gravity Trough Kick-Out Diverter	White	Right	14.5" x 6" x 6"
KOLTN	DryFlekt Gravity Trough Kick-Out Diverter	Tan	Left	14.5" x 6" x 6"
KORTN	DryFlekt Gravity Trough Kick-Out Diverter	Tan	Right	14.5" x 6" x 6"
KOLGY	DryFlekt Gravity Trough Kick-Out Diverter	Grey	Left	14.5" x 6" x 6"
KORGY	DryFlekt Gravity Trough Kick-Out Diverter	Grey	Right	14.5" x 6" x 6"

BERO^Xpert

NORTH AMERICA

TILTRK
48"W x 85"L x 51"H

Job Site Tools

Tilt Truck Super Heavy Duty

- 2,300 lbs. capacity,
2 cubic yards
- 14" drive wheels
- Towable, forklift pick up
for easy job site dumping



Additional Sizes
Available

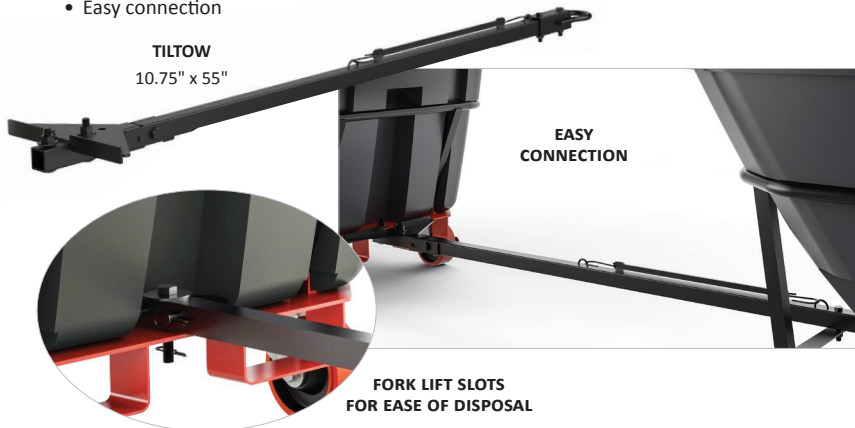
Tow Bar for Tilt Truck

- Easy connection

TILTOW
10.75" x 55"

**EASY
CONNECTION**

**FORK LIFT SLOTS
FOR EASE OF DISPOSAL**





INDEX

Premium Drywall Finishing Blades	2
BERO-Grip Drywall Finishing Blades	4
Joint Knives/BEROXpert Corner Trowels	6
Drywall Trowels	8
Black Label Tools	12
Mud Rollers/BERO Bailer™	13
Dustless Sanding System	14
Inspection Lamp Kit	15
Floats	16
Rasps	17
AAC Tools	18
Plastic Components	20
Tajima blades, drywall rasp & tape	22
Tytan adhesive	23
DryFlekt, Inc.	24
Job Site Tools	25
Terms & Conditions	26

How to Order

Our operation hours are 8am to 5pm Monday through Friday EST. Call us at 770.710.0927. Our email and fax operate 24/7. Email us at: sales-usa@beroxpert.com or fax us at: 888.502.0566.

Return Policy

BEROXpert North America LLC will accept the return of merchandise for exchange or credit only with advance written authorization. Returned materials will be credited at the actual cost paid as determined by the proof of purchase, LESS ALL FREIGHT COSTS paid by BEROXpert North America LLC. We do not accept returns on electronics, chemicals or coatings. Returns must be made within 15 days of invoice and must be in new, re-sellable condition upon receipt. Materials returned must be shipped pre-paid to BEROXpert North America LLC. Discontinued items and special orders cannot be returned. Returns subject to minimum 15% restocking fee.

Shipping Policy

In case any SHORTAGE OR DAMAGE incurred during transportation is detected, notify the delivering transportation agent and BEROXpert North America LLC immediately. If Customer has paid the freight bills, Customer must file a claim within 3 calendar days from receipt of goods, or risk losing any recovery from the freight carrier. Our responsibility for delivery of goods ends when we have our signed Bill of Lading by our local transportation agent. Upon Customer request, replacement shipment will be made subject to general terms and conditions as a new order.

Warranty

All of our products carry an unconditional 6-month guarantee. BEROXpert North America LLC must be notified within 36 hours of receipt of defective or damaged merchandise or shortages. Warranty will be void for any equipment or tools that are disassembled without prior written consent from BEROXpert North America LLC. Defective products will either be replaced or repaired at no charge at BEROXpert North America LLC's discretion. Abused or misused tools will be repaired and returned only if the customer consents to charges. The maximum amount of Liability BEROXpert North America LLC, shall have is the actual purchase price of products obtained through this catalog. Proper Operation and Maintenance. Buyer must properly operate and maintain the product, including parts and accessories, in compliance with all operation and maintenance instructions, in normal use, and in good condition and repair. Authorization for modification. Buyer must obtain written authorization from BEROXpert North America LLC before making any modification of any product, part or accessory.

Disclaimer

All prices are subject to change without notice. All prices are in US Dollars. The products in this catalog are offered as options for the purchaser. Having no control over the use of the products in this catalog, we assume no liabilities connected with their use. Under no circumstances are we or the seller liable for any loss, damage or expense of any kind arising out of the use or inability to use our products. The product descriptions and/or photos described or shown may have changed since the publication of this catalog.

BEROXpert
NORTH AMERICA

1000 Northfield Court | Suite 110
Roswell, GA 30076
770.710.0927

www.BEROXpertNorthAmerica.com

TOOLS ARE OUR PASSION SO WE MADE THEM OUR PROFESSION™

Who we are

After many years of importing their handmade, premium quality tools, BEROXpert North America, LLC is pleased to announce that we are now open in Roswell Georgia. We are the exclusive North American representative for BEROXpert Germany.

Craig Barnaby has been in the industry since 1985 working for a major EIFS manufacturer, a multi-yard distributor then as a VP of Marketing and Sales for a construction tool and CNC equipment supplier. Frank Beresowski, our manufacturing partner, has been in the industry since 1992 as a tool and die journeyman and then as a bag goods representative before starting BEROXpert Germany in 2010.

Our motto of **Tools are our Passion so we made them our Profession™** drives us to perfection. BEROXpert North America's Management and Operations Team has a combined 61 years of construction trade and supply experience.

WHAT we offer

BEROXpert North America specializes in handmade ergonomic drywall tools, plastering and other industry tools. Quality and innovation are the things that drive us. There are many tools used in our industry, but there is only one BEROXpert North America. Our tools are intended to increase the finished quality of drywall and plastering so owners will see an unparalleled value in their final project.

We will also be working with other carefully selected vendors that will allow us to supply the needs of our dealers/distributors such as drywall knives, drywall adhesives, rasps, tilt trucks, etc. Don't see what you need? Just call or email us.

OUR mission

We will strive to be a market leader and to be respected in our industry because of the honesty and integrity within our ranks.

We will look for opportunities to give back to and support our industry and community.

We will encourage our employees to personally hold themselves to the highest standards, to be caretakers of their peers, competitors and those around them that they can lend a hand to and influence.



BERO **X**pert

NORTH AMERICA

www.BEROxpertNorthAmerica.com

1000 Northfield Court | Suite 110 | Rosewell, GA 30076
770.710.0927 voice | 888.502.0566 fax